

BEAT GREASE WITH **BIG DIPPER**[®]

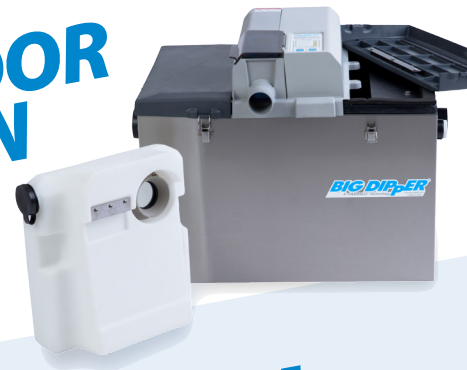
COMPACT
Space-Efficient Design



USER FRIENDLY
User Interface with
Easy to Operate Controls



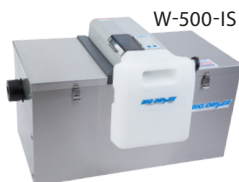
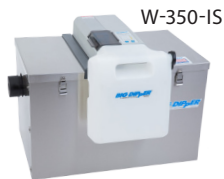
ADVANCED ODOR PROTECTION
Keeps Odors in the Tank
and Out of the Kitchen



LONG-TERM SAVINGS
Self-Maintain your Grease
Interceptor and Stop Paying
Monthly Pumping Fees



Automatic Grease Removal Devices



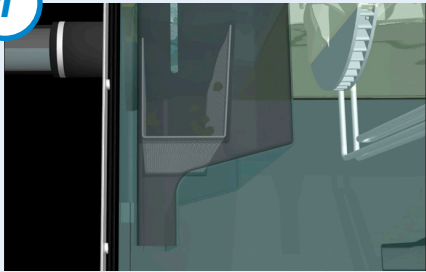
A THERMACO[®] Technology

www.big-dipper.com / 1-800-633-4204 / info@thermaco.com

© 2017 • Thermaco, Inc

HOW DOES AN AUTOMATIC GREASE REMOVAL DEVICE WORK?

1



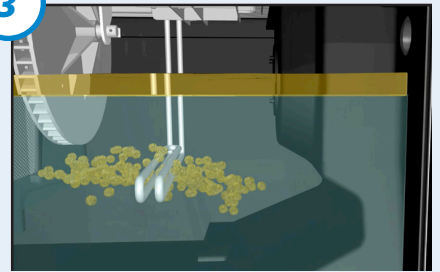
Solids Captured by Internal Strainer

2



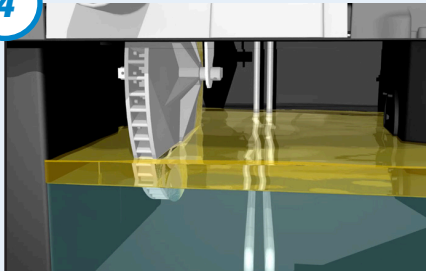
Grease Flows through Stainer Basket into Tank

3



Grease Rises to Top of Water in Tank

4



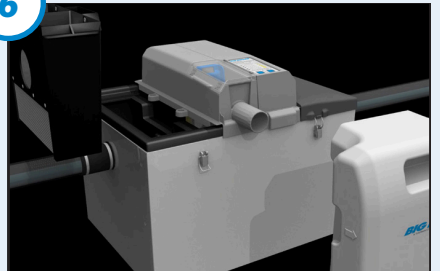
Skimming Wheel Activates Periodically Based on Setting Chosen

5



Grease is Scraped Off Skimming Wheel by Wiper Blade Assembly

6



Grease and Solids are Emptied Daily or More Often as Needed

Big Dipper® Automatic Grease Interceptor Specifications

Model	Capacity			Dimensions (All measurements are to center pipe. Length is from inlet to outlet.)								Electrical Assemblies	Electrical
	Flow Rate (GPM)	Grease* (lbs)	Solids Strainer (gal.)	Inlet/Outlet Size (in.)	L (in.)	W (in.)	H (in.)	Inlet Height (in.)	Clearance Required** (in.)	Vessel/Chamber Vent (in.)			
W-200-IS	20	47	1.85	2	25.5	17.875	14.29	6	22.25	1	1	115V 50/60Hz (10.2 Amps) †	
W-250-IS	25	56.4	1.85	2	22.5	17.875	18.79	10.5	26.75	1	1	115V 50/60Hz (10.2 Amps) †	
W-350-IS	35	85.18	2.5	3	32	17.875	21.83	12.5	33.25	1	1	115V 50/60Hz (10.2 Amps) †	
W-500-IS	50	108.4	2.5	3	38	17.875	21.86	12.5	33.25	1	1	115V 50/60Hz (10.2 Amps) †	
W-750-IS	75	168.95	3.7	4	46	17.875	25.92	16.5	39.5	1	1	115V 50/60Hz (10.2 Amps) †	
W-1000-IS	100	207.6	3.7	4	60.6	17.875	25.88	16.5	39.5	1	2	230V 50/60Hz (10.2 Amps) †	

*Capacity per ASME A112.14.3 Test at Breakdown Point

**Measured from bottom of unit, clearance required to remove Internal Strainer Basket

†230V 50/60Hz (5.1 Amps) Models Available. Add suffix-E to model number, i.e. W-200-IS-E.

If non-standard plug is required, contact Thermaco for additional assistance.

A THERMACO® Technology

www.big-dipper.com / 1-800-633-4204 / info@thermaco.com

© 2017 • Thermaco, Inc